

**POLK COUNTY, TEXAS
FOR IMMEDIATE RELEASE**

Date: August 2, 2024

Time: 10:30 a.m.

Contact: Polk County Office of Emergency Management
(936) 327-6826; Fax: (936) 327-6890



**HURRICANE BERYL
DISASTER DEBRIS PICK-UP**

Polk County will begin disaster debris pick up for Hurricane Beryl today, August 2, 2024.

Disaster impacted residents were asked to sort and stage their disaster debris on the county-maintained road right-of-way according to the FEMA Disaster Debris Removal Guidelines depicted on page 2 of this press release.

- Homeowners with disaster damage should have submitted a TDEM iSTAT Damage Survey.
- Homeowners who have disaster debris should have submitted a Debris Pick-up Survey, and surveys submitted after August 5th will not be considered.
- Disaster debris should not be placed near trees, poles, fire hydrants, meters, mailboxes, or any other structure that would make removal of debris difficult.
- Debris must not be in ditches or natural drainage ways that will impede the flow of water.
- Debris must not be on roadways which will become a hazard to traffic.
- The County will not remove waterway debris.
- Homeowners if you hire a contractor to cut a tree off of your home, make certain the contractor hauls off the debris.
- Homeowners if you hire a contractor to repair your home, make certain the contractor hauls off the debris.
- Homeowners should check their insurance policies for any repair or other damage elements eligible for reimbursement.
- Businesses are not eligible for disaster debris pickup.

Disaster Debris Pick-up Survey:

<https://www.surveymonkey.com/r/B3CQQDP>



Submitting this Survey does not guarantee your disaster debris is eligible for pickup. The information provided in this survey will enhance our ability to allocate resources appropriately and expedite the debris removal process.

Please look for further updates on the Polk County Emergency Management Facebook page (<https://www.facebook.com/PolkCountyEmergencyManagement>) and the Polk County Emergency Management website www.PolkCountyOEM.com.

For questions regarding disaster debris, please contact Polk County Emergency Management at 936-327-6826 Monday through Friday from 8 a.m. to 5 p.m.

Check with your local office of emergency management for more information on debris removal.

Debris Removal Guidelines for Private Residential Properties

In efforts to expedite the debris removal process, please follow these rules.

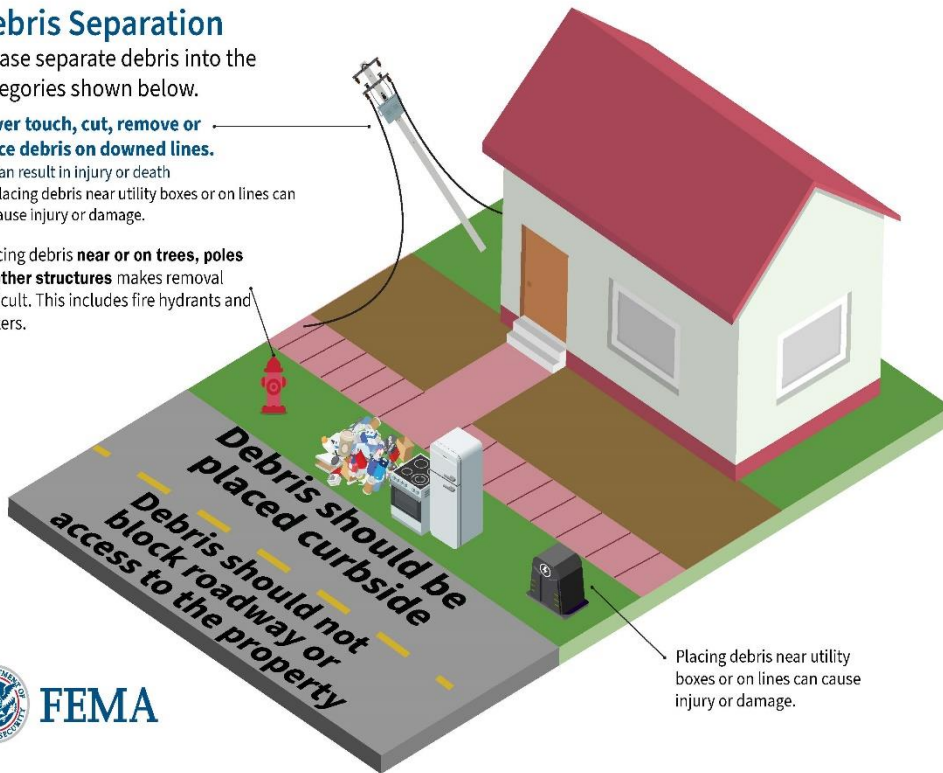
Debris Separation

Please separate debris into the categories shown below.

Never touch, cut, remove or place debris on downed lines.

- Can result in injury or death
- Placing debris near utility boxes or on lines can cause injury or damage.

Placing debris **near or on trees, poles or other structures** makes removal difficult. This includes fire hydrants and meters.



Large Appliances
Refrigerator, washer/dryer, air conditioner, stove, water heater, dishwasher. Do not leave doors unsealed or unsecured.



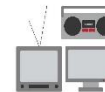
Construction Debris
Building materials, drywall, lumber, carpet, furniture, plumbing.



Vegetative Debris
Tree branches, leaves, logs, plants.



Hazardous Waste
Oil, battery, pesticide, paint, cleaning supplies.



Electronics
Television, computer, stereo, phone, DVD player.