



# Eliminacion Final de Desechos de Inundacion

Contratistas haran la recogida final de escombros de inundacion dentro de las zonas que fueron afectadas y evacuadas obligatoria del Condado que incluye Holiday Lake Estates, River Lake Estates, Taylor Lake Estates, and Siesta Country seccion 3-5 el **Viernes Diciembre 1, 2017**. Nos disculpamos por cualquier inconveniente.

Residentes del Condado Polk necesitan deshacerse de basura domestica de la misma manera que lo hacian antes el desastre.

Residentes urge colocar desechos de la inundacion a lo largo de las carreteras inmediatamente. Escombros de construccion, desechos peligrosos para el hogar, electronicos, y las mercancías blancas deben ser clasificadas por monton y colocarlas a lo largo de las carreteras segun a la tabla de abajo.

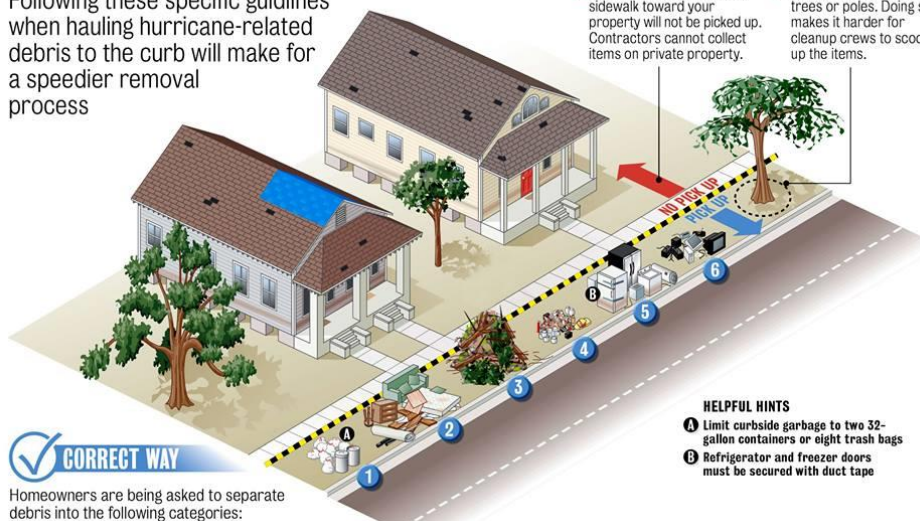
## HAULING HURRICANE-RELATED DEBRIS TO THE CURB IN PARTICIPATING AREAS

Following these specific guidelines will make for a speedier removal process.

Check with your local government on what is available for you.

### PICKING UP THE PIECES

Following these specific guidelines when hauling hurricane-related debris to the curb will make for a speedier removal process



#### WRONG WAY

##### CROSSING THE LINE

Any debris placed from the sidewalk toward your property will not be picked up. Contractors cannot collect items on private property.

##### PROPPING UP

Do not set debris against trees or poles. Doing so makes it harder for cleanup crews to scoop up the items.



#### CORRECT WAY

Homeowners are being asked to separate debris into the following categories:

- |  |  |   |  |  |  |
|--|--|---|--|--|--|
| <p><b>1 HOUSEHOLD GARBAGE</b></p> <ul style="list-style-type: none"> <li>➤ Bagged trash</li> <li>➤ Discarded food</li> <li>➤ Packaging, papers</li> <li>➤ All garbage should be placed curbside the night before the scheduled weekly pickup.</li> </ul> | <p><b>2 CONSTRUCTION DEBRIS</b></p> <ul style="list-style-type: none"> <li>➤ Building materials</li> <li>➤ Drywall</li> <li>➤ Lumber</li> <li>➤ Carpet</li> <li>➤ Furniture</li> <li>➤ Mattresses</li> <li>➤ Plumbing</li> </ul> | <p><b>3 VEGETATION DEBRIS</b></p> <ul style="list-style-type: none"> <li>➤ Tree branches</li> <li>➤ Leaves</li> <li>➤ Logs</li> </ul> | <p><b>4 HOUSEHOLD HAZARDOUS WASTE</b></p> <ul style="list-style-type: none"> <li>➤ Oils</li> <li>➤ Batteries</li> <li>➤ Pesticides</li> <li>➤ Paints</li> <li>➤ Cleaning supplies</li> <li>➤ Compressed gas</li> </ul> | <p><b>5 'WHITE' GOODS</b></p> <ul style="list-style-type: none"> <li>➤ Refrigerators</li> <li>➤ Washers, dryers</li> <li>➤ Freezers</li> <li>➤ Air conditioners</li> <li>➤ Stoves</li> <li>➤ Water heaters</li> <li>➤ Dishwashers</li> </ul> | <p><b>6 ELECTRONICS</b></p> <ul style="list-style-type: none"> <li>➤ Televisions</li> <li>➤ Computers</li> <li>➤ Radios</li> <li>➤ Stereos</li> <li>➤ DVD players</li> <li>➤ Telephones</li> </ul> |
|--|--|---|--|--|--|

#### HELPFUL HINTS

- A** Limit curbside garbage to two 32-gallon containers or eight trash bags
- B** Refrigerator and freezer doors must be secured with duct tape